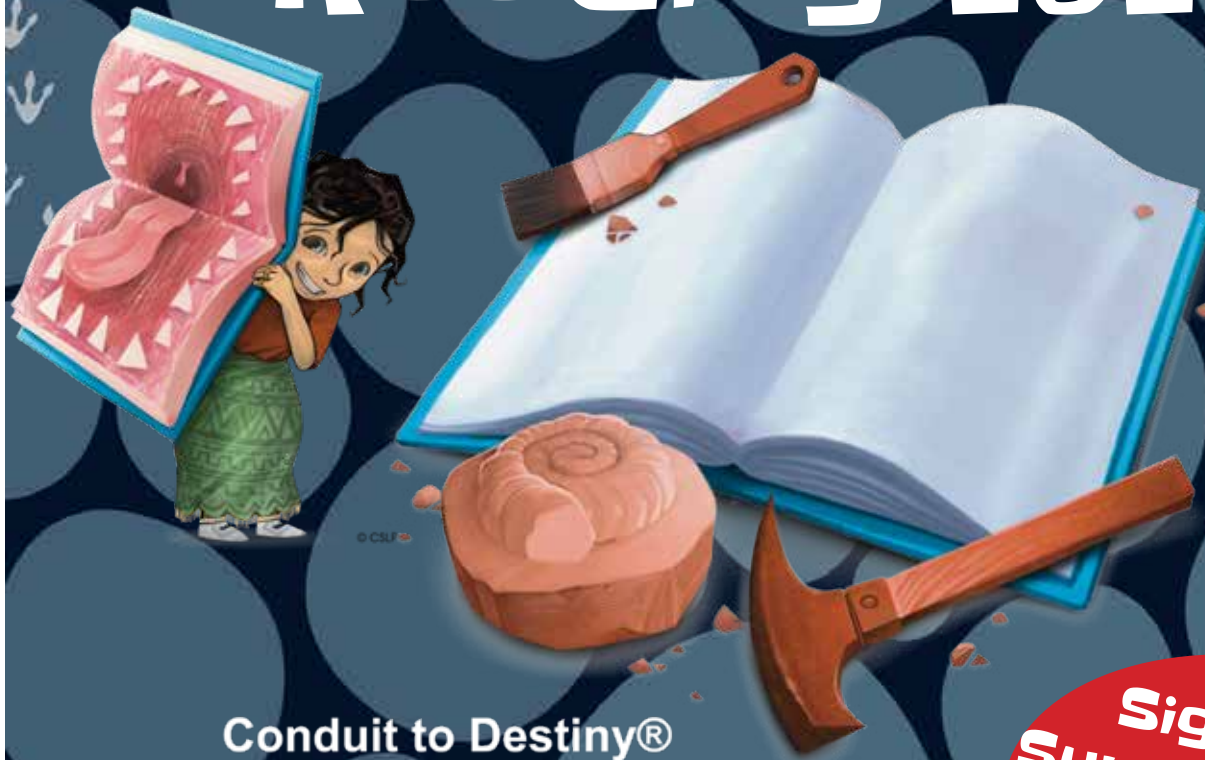




Summer Reading 2026



Conduit to Destiny®



**Greensboro
Public Library**

**Sign Up for
Summer Reading
& Get a FREE
Book!**

Dinosaur Adventure Challenge

Drop in for this fun obstacle course all about dinosaurs and prehistoric animals. Test your skills as you save dinosaur eggs, cross a lava flow, feed a hungry T-Rex, and more!

June 17 from 2:30 - 3:30 pm • Central Library

June 25 from 11 am - 12 pm • Glenn McNairy Branch

June 25 from 3 - 4 pm • Glenn McNairy Branch

August 6 from 11 am - 12 pm • McGirt-Horton Branch

August 15 from 10:30 - 11:30 am • Benjamin Branch

June 2 from 4 - 5 pm...Recycled Art - Make a special Creek Week themed art project out of non-recyclable materials. Learn which items are recyclable and those that are not. Kathleen Clay Edwards Family Branch.

June 3 from 4:30 - 6 pm...Creek Quest - We'll start indoors with hands-on water science. Then we'll head outdoors for a creek investigation. Wear clothes and shoes that can get wet while we explore. Kathleen Clay Edwards Family Branch.

June 5 from 10 am - 12 pm...Pretend Play: Let's Go on a Dinosaur Safari - Bring your teddy bear or other favorite stuffed animal for pretend play! Today will be all about dinosaurs. We will make "binoculars" to search for dinos hiding in the library, create our own fossils, "dig" for dinosaur bones, and more! This is a drop-in program for children ages 5 and under. Glenn McNairy Branch.

June 11 from 10:30 - 11:15 am...Little Beats, Big Fun - Enjoy music, movement, and playful learning with Gate City Musikgarten! This event is perfect for little ones and their grown-ups to connect, groove, and grow together. Hemphill Branch.

June 11 from 4 - 5:30 pm...Wild Wonders: Amazing Animal Adaptations! - Get ready to dive into the wild world of animal survival! Through hands-on science fun with microscopes, real specimens, stories, and games, children will uncover the fascinating ways creatures protect, hunt, and thrive. Scientist and author, Dawn Cusick, will share from her adventurous books *Animals That Make Me Say Ouch!* and *Animals That Make Me Say Look Out!* Kathleen Clay Edwards Family Branch.

June 12 from 11 am - 12 pm...Wonderful Wand-makers - Whether it's a Harry Potter wand or a magical fairy wand, come make your own personalized, decorated wand, with all materials provided. Kathleen Clay Edwards Family Branch.

June 15 - All Day...Flags Around the World - Celebrate Flag Day, June 14, with a scavenger hunt of world flags and a design your own flag coloring sheet. This self-directed activity will be available during regular hours until June 30. Glenwood Branch.

June 15 from 2:30 - 3:30 pm...Summer Reading Kick-off: Make Your Own Dinosaur Egg - Create your own archaeological wonder and learn all about Summer Reading 2026, *Unearth A Story!* Kathleen Clay Edwards Family Branch.

June 18 from 10:30 - 11:30 am...Preschool Dino Fest - You'll have a roaring good time at this extra special dinosaur event. We'll have several stations with craft and play activities that are just perfect for children ages 2 -7. Dig for dinosaurs and more. Hemphill Branch.

June 18 from 2:30 - 3:15 pm...Unearth a Story with the NC Zoo - This presentation with the NC Zoo will engage participants through fun activities, awesome animal artifacts and a live animal or two! Benjamin Branch.

June 20 - All Day...Stuffed Sleepover - Drop off your favorite stuffed animal for a wild weekend at the library on Saturday, June 20 between 9 am and 1 pm! Pick them up on Monday, June 22 from 9 am to 6 pm, and see the pictures of what they were up to while earning a special library card for your animal! Kathleen Clay Edwards Family Branch.

June 20 from 9 am - 5 pm...Dino Cards for Dad - Father's Day is June 21 so stop by today to make a dinosaur-themed card for your dad or someone you love! Glenn McNairy Branch.

June 20 from 10:30 am - 12 pm...Morning Movies - *The Land Before Time* - Join us for this childhood classic movie about dinosaurs. Rated G. Glenwood Branch.



June 20 from 2 - 4:15 pm...Saturday Matinee - *Jurassic Park* - Scientists are invited to tour an island theme park with real dinosaurs. They have been assured it is safe, but is it really? Rated PG-13. Glenwood Branch.



Get ready to crank up the fun when Big Bang Boom takes the stage with a high-energy concert made for children and grown-ups who love great music too. This rockin' trio blends pop hooks, hip-hop beats, and playful lessons into songs that are catchy, clever, and full of surprises. Come sing, move, laugh, and learn together!

June 22 from 10 - 11 am • Kathleen Clay Edwards Family Branch

June 22 from 2:30 - 3:30 pm • Hemphill Branch

June 22 from 4:30 - 5:30 pm • Central Library



Red, White, & Boom!

Celebrate America's 250th birthday with a fun-filled, hands-on history event for children and families! Explore Revolutionary-era games, crafts, and activities—make a tricorne hat, crack secret spy codes, play with colonial toys, and learn about North Carolina pirates' role in the Revolution. Enjoy red, white, and blue crafts, music, a photo op, and more. Drop in and discover history through play!

June 23 from 2:30 - 3:30 pm • Benjamin Branch

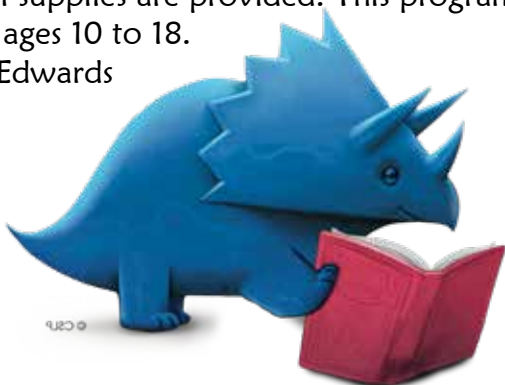
June 29 from 2 - 3:30 pm • Glenwood Branch

July 2 from 2 - 3 pm • Glenn McNairy Branch

July 8 from 10:30 - 11:30 am • Hemphill Branch

June 23 from 3 - 4 pm...ecoExplore with the Greensboro Science Center - Scientists need YOUR help in studying animals everywhere, including your own backyard! Join us for an Introduction to Herpetology, the study of reptiles and amphibians! You'll learn all about our reptile and amphibian friends from one of the educators at the Greensboro Science Center! You can also join the crew of eco-Explorers — children who submit observations of plants and animals for scientists to study and earn prizes while they do it. Today's program will also "Unearth a Story" about Komodo Dragons, the largest lizards in the world. Registration is recommended. To register, please call 336-373-2015. Glenn McNairy Branch.

June 24 from 3 - 4 pm...Bead & Bracelets for Tweens - Design your own bracelets for friends and for yourself! All supplies are provided. This program is intended for ages 10 to 18.
Kathleen Clay Edwards
Family Branch.



June 25 from 10 - 11 am...Mad Science - Their mission is to spark the imagination and curiosity of children with fun, interactive, and educational activities. Their goal is to instill a clearer understanding of science and how it affects the world around us. Join us as we welcome Mad Science's wacky scientist. Glenwood Branch.

June 26 from 3 - 5 pm...McGirt Horton Summer Kick Off Cookout - Join us for an afternoon of fun, food, and family-friendly activities! Children and teens can register for Summer Reading, enjoy games and interactive activities, and celebrate the start of the season filled with books and learning. Families will enjoy a community cookout with classic favorites, and registered children will receive a free book to help jumpstart their summer reading journey. This kickoff event is designed to build excitement around reading, encourage lifelong literacy habits, and bring our community together in a welcoming library environment. McGirt-Horton Branch.

June 27 from 10 - 11:30 am...Terrific Tie Dye for Families - Join us for some colorful fun! Bring a plain white t-shirt and drop by to create some wearable art. Be sure to dress for mess. Hemphill Branch.

June 29 at 2:30 pm...Steve Somers Magic Show - Unearth reading treasure through magic, science, and storytelling. This high-energy magic show blends silly surprises, a playful puppet, music, books, and hands-on discovery as children dig into the past, explore the present, and imagine the future. Along the way, young readers build curiosity, observation skills, and a love of reading through unforgettable stories and magical moments. Books. Science. Magic. Can you dig it? Benjamin Branch.

June 30 from 10 - 10:45 am...Wild Tales - Enjoy a high-energy wildlife presentation with unforgettable animal ambassadors and fascinating facts. This interactive program uncovers how wild creatures, their habitats, and humans are all part of one connected tale. Along the way, you'll dig into why conservation matters and how everyday choices help protect the natural world. Vance Chavis.

June 30 from 11:15 am - 12:15 pm...Wild Tales - Enjoy a high-energy wildlife presentation with unforgettable animal ambassadors and fascinating facts. This interactive program uncovers how wild creatures, their habitats, and humans are all part of one connected tale. Along the way, you'll dig into why conservation matters and how everyday choices help protect the natural world. Central Library.

June 30 - July 2 from 1 to 4 pm...STEM Camp - Join us for exciting STEM technology, in partnership with NC Cooperative Extension, to learn about coding, robotics, drones, and more! Registration for this three-day camp is required. This program is intended for ages 8 to 14. Kathleen Clay Edwards Family Branch.

June 30 from 7 - 8 pm...All Abilities: 4th of July Sensory Craft and Play - Celebrate the 4th of July with crafts and sensory play! This inclusive program will offer a variety of hands-on activities, including sensory bins, puzzles, crafts, toys, and more. Children of all ages (and siblings) are welcome. Glenn McNairy Branch.

July 6 from 11 am - 12 pm Firefighters and Firetrucks - Learn all about fire safety with some of Greensboro's finest firefighters. You might even get a chance to see the firetruck up close! Kathleen Clay Edwards Family Branch.

July 8 from 10 - 11 am...Captain Jim is Magic - Enjoy a magical adventure with Captain Jim and his high energy, interactive performance with positive and uplifting messages throughout. Glenn McNairy Branch.

Tombs & Catacombs

Travel below the surface and visit ancient underground cities and spaces. See the Paris Catacombs and the Ellora Caves of India. Visit the inside of an Egyptian pyramid and the Wieliczka Salt Mine. Experience the Glow Worm Caves of New Zealand and dig for buried treasure! This immersive program will delight the whole family!

June 25 from 10 am - 3 pm • Central Library

July 13 from 2 - 3:30 pm • Glenwood Branch

July 23 from 11 am - 12 pm • McGirt-Horton Branch

July 28 from 2:30 - 5 pm • Hemphill Branch

July 29 from 10:30 am - 12 pm • Hemphill Branch

Block Party: Unearth a Minecraft Adventure

Drop into a Minecraft-inspired world of hands-on fun. Explore creative stations featuring pixel art, scavenger hunts, LEGO building, snap circuits, trivia, and an action-packed obstacle course. Blend STEM, art, literacy, and play as you craft, build, dodge mobs, and test your skills. No screen required, just imagination.

June 13 from 10:30 - 11:30 am • Benjamin Branch
July 8 from 3 - 4 pm • Kathleen Clay Edwards Branch
July 14 from 11 am - 12 pm • McGirt-Horton Branch
July 21 from 10:30 - 11:30 am • Hemphill Branch
July 30 from 2 - 3 pm • Glenn McNairy Branch
August 5 from 2:30 - 3:30 pm • Central Library

July 8 from 4:30 - 5:30 pm...Captain Jim is Magic - Enjoy a magical adventure with Captain Jim and his high energy, interactive performance with positive and uplifting messages throughout. Central Library.

July 9 from 4 - 5 pm...CSI: GPD - Unearthing Evidence for Teens & Tweens - Ever wonder how investigators solve mysteries in real life? Join a CSI team member from the Greensboro Police Department to learn about the CSI career path and see how clues are uncovered at a crime scene. Discover real techniques used to spot, collect, and analyze evidence in this interactive, behind-the-scenes program. Benjamin Branch.

July 16 from 10 - 11 am...Mr. Rocky - Get ready for fun-filled musical enrichment! Mr. Rocky's high energy interaction is perfect for children of all ages. Hemphill Branch.

July 16 from 2:30 - 3:30 pm...Mr. Rocky - Get ready for fun-filled musical enrichment! Mr. Rocky's high energy interaction is perfect for children of all ages. Vance Chavis Branch.

July 16 from 4:30 - 5:30 pm...Resin Art for Tweens - Create your own unique resin gem with flowers, sparkles, and more! This program is intended for ages 10 to 15. Kathleen Clay Edwards Family Branch.

July 17 from 10:30 - 11:15 am...Little Explorers Dig the Beach - Join us for STEM, art and literacy activities inspired by the beach for children aged 3 to 5. We'll mix, match, count, create and learn together. Please dress for mess. Benjamin Branch.

July 18 from 3 - 4 pm...Studio Saturday: Dinosaur Crafts - Everyone loves dinosaurs! Join us to make a frame-worthy dinosaur shadow artwork and create your own fossil. This event is for families. Hemphill Branch.

July 20 from 3 - 4 pm...Police Officer Safety - Learn all about police officer safety with some of Greensboro's finest police officers. You might even get a chance to see a police dog up close! Kathleen Clay Edwards Family Branch.

Shark Teeth Explorers

Dig deep and unearth the world of ancient sharks. Children will learn about fossils and shark teeth with engaging presentations, stories and interactive fun. Then it's time to hunt! Search for hidden shark teeth, identify different shark species, and enjoy a hands on craft.

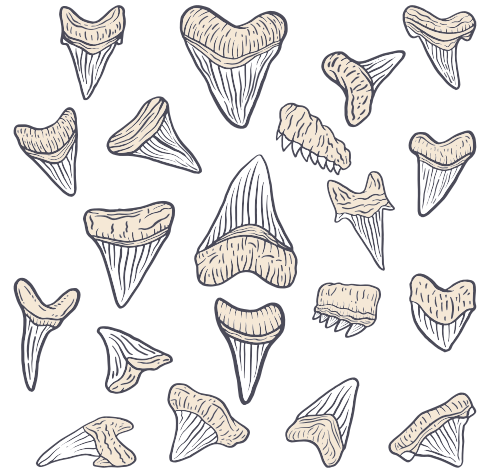
July 9 from 2 - 3 pm • Glenn McNairy Branch

July 11 from 10:30 - 11:15 am • Benjamin Branch

July 22 from 3 - 4 pm • Kathleen Clay Edwards Branch

July 29 from 2:30 - 3:30 pm • Central Library

August 13 from 11 am - 12 pm • McGirt-Horton Branch



July 25 from 10 - 11 am...All Abilities: Dinosaur Sensory Storytime - Join us for a sensory storytime about dinosaurs - followed by dinosaur-themed sensory activities! Designed for children with special needs, this storytime follows a visual schedule and is followed by free play with a variety of hands-on activities, including sensory bins, puzzles, crafts, and more. Children are not expected to sit still or stay quiet. All ages are welcome. Glenn McNairy Branch.

July 25 from 10:30 - 11:30 am...Mad Science - Experience science, humor and fun during this interactive, out-of-this world presentation by science educators for ages 5 to 12. Kathleen Clay Edwards Family Branch.

July 25 from 4 - 5 pm...Washi Wearables for Teens & Tweens - Turn everyday odds and ends into wearable art at this hands-on teen craft program. Wrap paper clips and wooden spoons in colorful washi tape, then transform them into one-of-a-kind jewelry. Mix patterns, layer textures, and create pieces that are totally your style. All supplies will be provided. Just bring your creativity. This program is for 11-18 year olds. Benjamin Branch.

July 28 from 3 - 4 pm...Mini Canvas Art for Tweens - How small can you draw? Paint your own teeny, tiny masterpiece to bring home with you. This program is intended for ages 10 to 15. Kathleen Clay Edwards Family Branch.

Ancient Egypt: Mummies, Masks & Marvels



Step into the sands of time and unearth the wonders of Ancient Egypt. Explore hands-on stations just like real archaeologists on a dig. Craft a King Tut mask, create a cartouche necklace with your name in hieroglyphs, design shimmering scarab art, build pyramids and more, all while uncovering fascinating facts about life along the Nile.

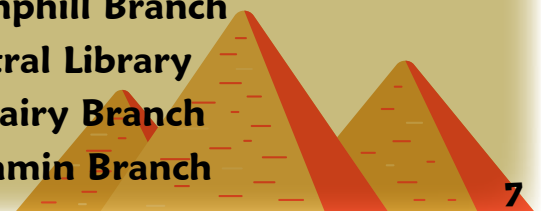
June 16 from 10:30 - 11:30 am • McGirt-Horton Branch

June 30 from 10:30 - 11:30 am • Hemphill Branch

July 15 from 2:30 - 3:30 pm • Central Library

July 22 from 3 - 4 pm • Glenn McNairy Branch

July 30 from 2:30 - 3:30 pm • Benjamin Branch



Greensboro Public Library Anime Con



GPL Anime Con is a single-day mini convention dedicated to bringing the fan community of Greensboro together to celebrate manga, anime, video games, cosplay, and Asian pop culture! Expect cool cosplay, educational and entertaining panels, talented artists, vendors, special guests, workshops, activities for children, and more! This event is free and open to all ages.

August 8 from 10 am - 5 pm • Central Library

July 30 from 10:30 - 11:15 am...Preschool Splash Day - We're taking the fun outside for water play in the garden, weather permitting. We'll have water balloons, sprinklers, and popsicles. Be sure to wear clothes that can get wet, including flip-flops or water shoes for safety. Bring a towel and get ready for a splashing good time. Hemphill Branch.

August 3 from 2 - 3:30 pm...I Survived Survival Skills Camp - Join us as special guests from the community help us prepare for emergency situations. Learn tips to remain calm, the importance of situational awareness, orienteering skills, and simple first aid with activities and take-a-ways. Youth are natural explorers and survival skills give them confidence, and teach them how to take care of themselves in an emergency. Students gain a sense of responsibility, resourcefulness, and independence with survival skills, which bonds families together and builds character. Glenwood Branch.

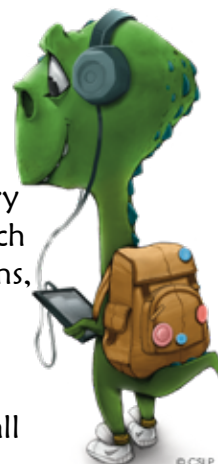
August 4 from 2:30 - 3:30 pm...Geodes, Gemstones, and Geology - Where do rocks come from? Join us to explore a variety of rocks and minerals. We'll learn about the science and beauty of rocks. Create some geode art and take home a gemstone of your own. Hemphill Branch.

August 4 from 3 - 4 pm...Unicorn Party - Decorate a unicorn horn, paint a rainbow craft, and get a fun unicorn tattoo at the unicorn party! Kathleen Clay Edwards Family Branch.

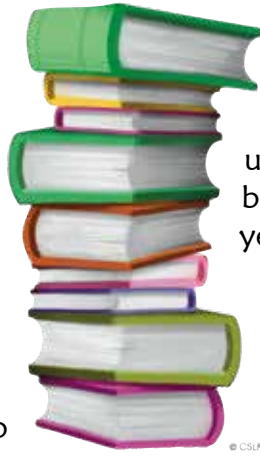
August 4 from 7 - 8 pm...All Abilities: Unearth a Story Sensory Craft and Play - Dig into crafts and sensory play all about bugs, butterflies, and the garden! This inclusive program will offer a variety of hands-on activities, including sensory bins, puzzles, crafts, toys, and more. Children of all ages (and siblings) are welcome. Glenn McNairy Branch.

Dino Dash Scavenger Hunt

Race into adventure with Dino Dash through the Library, a dinosaur-themed scavenger hunt inspired by the Summer Reading theme Unearth a Story. Each library location features a different dinosaur waiting to be discovered. Customers can search for hidden dinosaur clues by completing scavenger hunts, attending library programs, or participating in hands-on activities at each branch. Every successful discovery earns a limited-edition dinosaur-themed button. Collect them all to complete the Dino Dash. Supplies are limited and available while they last. Participants will log their discoveries on Beanstack, and customers who visit and complete activities at all branches will be entered into a grand prize drawing.



August 4 from 3 - 4 pm...ecoExplore with the Greensboro Science Center - Scientists need YOUR help in studying animals everywhere, including your own backyard! Join us for an Introduction to Entomology, the study of insects! You'll learn all about our insect friends from one of the educators at the Greensboro Science Center! You can also join the crew of ecoExplorers — children who submit observations of plants and animals for scientists to study and earn prizes while they do it. For more information about ecoExplore, visit the ecoExplore website. This event is recommended for ages 5 to 13. Space is limited, and registration is recommended. Register: 336-373-2015. Glenn McNairy Branch.



August 6 from 4 - 5 pm...Washi Desk Décor for Teens & Tweens - Decorate a small notebook, pencils, paper clips and more using colorful washi tape and fun patterns. Mix and match designs, layer textures, and turn everyday school supplies into something uniquely yours. All supplies provided. Just bring your creativity. This program is for 11-18 year olds. Benjamin Branch.

August 7 from 10:30 - 11:15 am...Little Explorers Dig Dinosaurs - Join us for STEM, art and literacy activities inspired by dinosaurs for children aged 3 to 5. We'll mix, match, count, create and learn - together. Please dress for mess. Benjamin Branch.

Young Builders

Building Fun at McNairy • Join us on the first Thursday afternoon of the month for building fun with LEGO, Duplos, and Lincoln Logs. All ages are welcome. **June 4 from 3 - 4:30 pm, August 6 from 2 - 4 pm • Glenn McNairy Branch.**

LEGO Mania at Hemphill Branch • Did you know that LEGO building improves problem-solving skills and concentration? Plus, it's fun! LEGO builders of all ages are invited to join us. **From 4 - 5 pm on June 9, July 14, August 11 • Hemphill Branch.**

LEGOs at Glenwood Branch • Not just LEGOs, it's so much more; challenge builds, friends to meet, and more. Toddler builders can play in a nearby area. **From 3:30 - 5 pm on June 16, and July 21 • Glenwood Branch.**

LEGO at the Library • Design and build your own LEGO creations. Challenge your friends to see what you can make! Choose one to display in the front case until the next LEGO program. **From 3 - 5 pm on June 17, July 15, August 19 • Kathleen Clay Edwards Family Branch.**

LEGO One Scoop Challenge • Join us for a LEGO One Scoop Challenge! All ages are welcome! **From 4:30 - 5:30 pm on June 18, July 16, August 20 • McGirt-Horton Branch.**

Benjamin Builders LEGO Challenge • Put your skills to the test in this open-ended challenge designed for school-age children. **From 2:30 - 4 pm on June 25, July 23 • Benjamin Branch.**

Bright Star Theatre



Bright Star Theatre (a national touring company of musician/actors) presents *Dino Tales*. Enjoy tall tales, fables, fun and facts brought to life by a cast of colorful dinosaur characters.

July 20 from 10:30 - 11:15 am • Benjamin Branch

July 20 from 2:30 - 3:30 pm • Glenwood Branch

Bright Star Touring Theatre presents the literary classic *Peter Pan* in a hysterical play within a play. Young audiences love the antics of Tinkerbell, bumbling Captain Hook, Darling Wendy (or should we say Wendy Darling) and of course the free-spirited adventurous boy who just wouldn't grow up.

July 20 from 4:30 - 5:15 pm • Glenn McNairy Branch



August 8 from 3 - 4 pm...Studio Saturday: Coral Reef Collage - Let's dive under the sea with this mixed media project. Add fish, seaweed, and more. This activity is great for families. Hemphill Branch.

August 18 from 7 - 8:30 pm...Homeschool 101 Information Meeting - Join us for this information session presented by the Greensboro Home Educators and the Greensboro Public Library for those new to homeschooling, those new to homeschooling in the Triad, and those wanting to get connected to support groups. Veteran homeschool parents will answer questions, and share information about co-ops, homeschooling teens, and homeschool sports. Benjamin Branch.

August 21 from 4:30 - 5:30 pm...Ice Cream Social - Join us for ice cream and fun as we say goodbye to summer! Families are invited to celebrate a season of reading, learning, and community connection with games, music and sweet treats. This end-of-summer gathering offers an opportunity for neighbors to come together, reflect on summer accomplishments, and prepare for a strong start to the school year. McGirt-Horton Branch.



Unearthly Creatures Escape Room at Benjamin Branch

Bigfoot! The Loch Ness Monster! Mothman! Discover clues and solve puzzles as you explore the lore of famous cryptids and unexplained creatures from around the world at this Escape Room for all ages.

You must register to participate in the experience, with each 45-minute time slot starting on the hour. Contact the Benjamin Branch at 336-373-7540 with any questions or to register for a time.

**All Week During Regular Hours
August 17 - 21
Benjamin Branch**



Read to a Pet Pal



Read-to-a-Pet with NC Pet Partners at McGirt-Horton Branch - Reading to a pet can improve confidence and comprehension skills. Trained therapy animals provide a calm, nonjudgmental audience for readers, whether struggling, reluctant, or new. Email Bonnie.Fulp@greensboro-nc.gov for a 20-minute session. **From 5:30 - 7 pm on June 3, June 17, July 1, July 15, August 5, August 19.**

Read with a Therapy Dog at Kathleen Clay - Practice reading out loud with a therapy dog and their owner. Call 336-373-2923 or stop by the branch to register for your 15 minute spot. This program is for children in K-5th grade. Kathleen Clay Edwards Family Branch. **From 3 - 5 pm on June 14, June 28, July 12, July 26, August 9 and August 23.**

STORYTIMES

Information about our storytimes can
be found on the Library's website calendar
at www.GreensboroLibrary.org



Sign Up for Summer Reading Today!

Library Locations

Benjamin Branch • 1530 Benjamin Parkway • 336-373-7540

Central Library • 219 North Church Street • 336-373-2046

Glenwood Branch • 1901 West Florida Street • 336-297-5000

Hemphill Branch • 2301 West Vandalia Road • 336-373-2925

Kathleen Clay Edwards Branch • 1420 Price Park Road • 336-373-2923

McGirt-Horton Branch • 2501 Phillips Avenue • 336-373-5810

Glenn McNairy Branch • 4860 Lake Jeanette Road • 336-373-2015

Vance Chavis Branch • 900 South Benbow Road • 336-373-5838

Conduit to Destiny®



sponsored by

